

## UPDATE (2/13/25) Tacoma Hills Neighborhood

Consumers Energy will begin natural gas utility work in mid-to-late February. This work is estimated to be completed between late March and mid-April.

Consumers Energy will replace a natural gas main and gas service lines that serve homes in the Tacoma Hills neighborhood. **If the service line to your house needs to be replaced, Consumers Energy will contact you directly to schedule this work. Gas service to your home will need to be shut off for a brief period to complete the replacement.** Scheduling with Consumers Energy in a timely manner will help keep the Local Roads Program on track.

Any questions regarding the gas upgrades should be directed to Adam Bertram with Consumers Energy at [Adam.Bertram@cmsenergy.com](mailto:Adam.Bertram@cmsenergy.com) or 517.374.2375.

This work is being performed in coordination with Meridian Township's Local Roads Program to reduce the need to cut the newly paved roads in the future. The roads that will be resurfaced in 2025 are shown in blue on the map at the bottom of this update, and Consumers Energy will be working in the project limits shown in blue on the map.

Spot repairs to storm drains will also be performed in coordination with the 2025 road resurfacing in Tacoma Hills.

Please continue to monitor this webpage for the most current construction updates.

A PDF version of the Tacoma Hills map, as well as an embedded image of the map, can be found below:

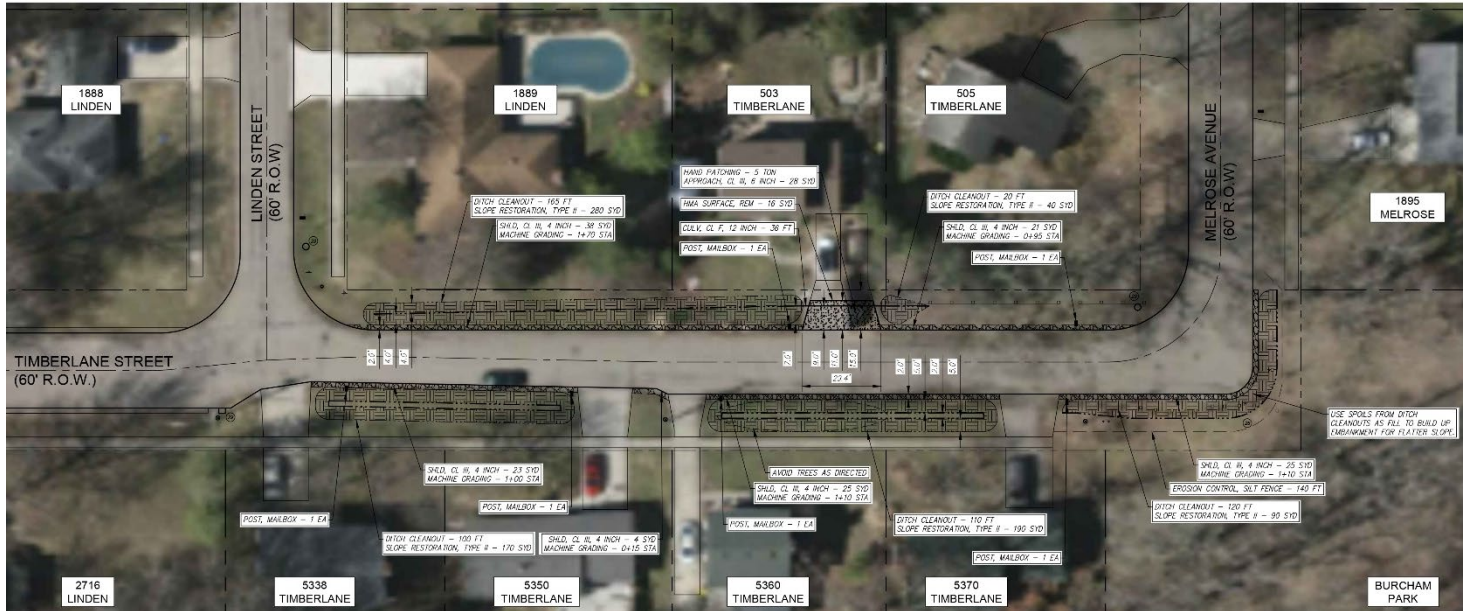
[Tacoma Hills 2024 and 2025 Construction Map](#)



## UPDATE (2/13/25) Timberlane St

We greatly appreciate your patience during construction. This spring we will complete the final phase of construction on Timberlane St. This will involve installing gravel shoulders off the edge of pavement where there is no curb and gutter. The Township's contractor will plant grass seed over the gravel shoulders.

This will also involve cleaning out ditches where there is no curb and gutter, as shown below:



NO trees will be removed during the ditch cleanout project. All ditches will all be restored with grass seed. The Township's contractor will return to touch up grass seed in spots where it does not germinate.

The engineering firm for this project is Spalding DeDecker, a quality engineering firm based in the Lansing area. The excavation contractor for this project is Youngstrom Contracting, a quality asphalt company based in the Lansing area.

While representatives from Spalding DeDecker and Youngstrom will be onsite during construction, please submit any questions or concerns to [dpw@meridian.mi.us](mailto:dpw@meridian.mi.us). Although field representatives are able to answer questions, they are not permitted to authorize changes to the plans or add additional work.

We sincerely apologize in advance for any inconvenience caused during construction, and we truly appreciate your patience and understanding while we work to improve your neighborhood and our entire community.

**Please note that we will issue another notice in the spring announcing the anticipated construction schedule once it is known. These second notices will likely be placed on mailboxes with blue painters tape.**

Please continue to monitor this webpage for the most current construction updates.